

Curved Slide Position Sensor XCS Series

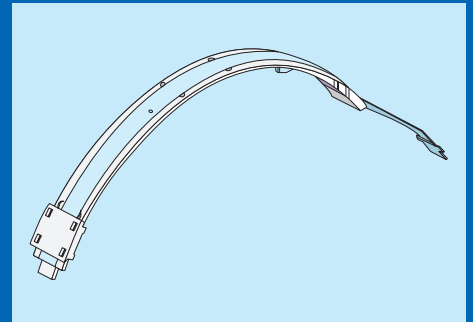
» SUMMARY

Introducing a curved variable resistor design.

Screen printed on PET film.

After years of continuous development, Noble's film technology has evolved to provide a curved variable resistor.

RoHS compliant and UL recognized.



» FEATURES

1

Carbon Ink technology developed for high performance

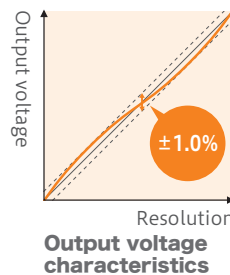
- ▶ Benefits of Film Integration Technology.
- ▶ Even with curved slide actuation, there is tightened linearity of +/-1%.



High performance carbon ink



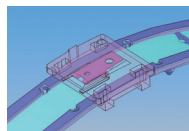
Printing machine for image processing



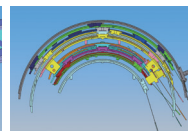
2

Respond flexibly to various curved surfaces

- ▶ Variable resistance film and wiper integrated into one unit.
- ▶ Customized curved surface radius and sliding curve.
- ▶ Available for a variety of applications.



Blocked wiper

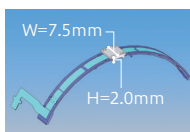


Customized design

3

Thin, lightweight and one step Installation

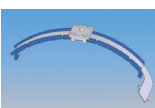
- ▶ Width approximately 7.5mm, height approximately 2.0mm.
- ▶ Design enables miniaturization and spacing savings.



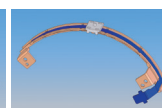
Thin design



Double sided tape



Fixed snap in



Fixed screw fastening

» PRODUCT APPLICATIONS

- Digital camera
- Focus for reflex camera
- Zoom control
- Position sensor for aperture stop



» BASIC SPECIFICATIONS

- Linearity +/-1.0%
- Rated voltage: 5V DC
- Minimum Curve Radius: R20
- Maximum mechanical rotational angle: 165 degrees
- Guarantee range of linearity : 161 degrees
- Operating temperature: -10 degrees C to +70 degrees C
- Slide life: 100,000 cycles