

# Long Stroke Linear Position Sensor -XLS120-

## » SUMMARY

Noble's lightweight and compact linear position sensor, integrating FPC formed by screen-printed silver and carbon traces on PET film with thermoplastic resin.

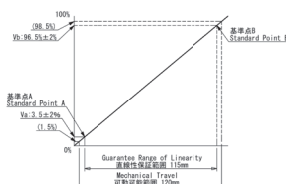
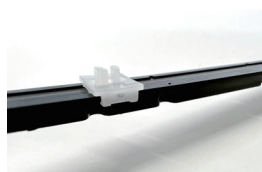
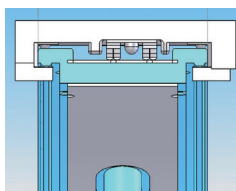
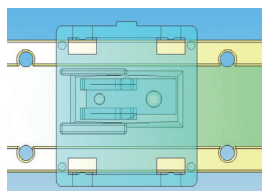


## » FEATURES

### Linearity and Hysteresis: $\pm 1.0\%$

- ▶ Enhanced linearity and hysteresis through movable detection element, integrated with Noble original monorail style molded body.

1



## » PRODUCT APPLICATIONS

- Syringe pump, Various Medical devices
- VR Goggle
- Movable LCD monitor
- Automotive parts
- Industrial equipment



## » BASIC SPECIFICATIONS

- Operating temperature:  $-15^{\circ}\text{C} \sim +60^{\circ}\text{C}$
- Nominal total resistance:  $60\text{Kohm} \pm 30\%$
- Rated voltage:  $5\text{V DC } 1\text{mA}$
- Movable amount:  $120\text{mm}$
- Specified linearity range: Up to  $115\text{mm}$
- Operating force: Less than  $0.25\text{N}$
- Slide life:  $100,000\text{cycles}$  (Round trip)

2

Extended stroke lengths exceeding 100mm are available.

3

Flexible customization for FPC shape, terminal type, detection range and mounting style is possible.

Together, we make good sense.

 NOBLE

Contact us

Teikoku Tsushin Kogyo Co., Ltd.  
Marketing & Sales Planning Section

45-1 Kariyado, Nakahara-ku, Kawasaki, Kanagawa 211-8530, Japan  
Phone: +81(44)-433-7511 Fax: +81(44)-433-6719  
E-mail: contact@hs.noble-j.co.jp

<https://www.noble-j.co.jp>

Teikoku Tsushin

search