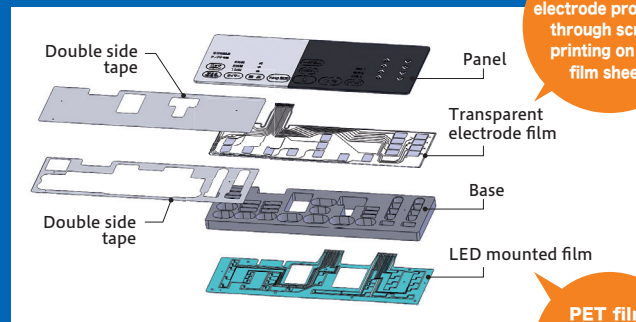


Transparent Electrode Touch Sensor Panel

» SUMMARY

Film Integration Technology is unique to Noble and has been developed to provide our transparent electrode touch sensor unit. 『Formation of transparent electrode』 and 『Low temperature soldering for LED』 are applied on PET film with great design flexibility.



Transparent electrode produced through screen printing on PET film sheets

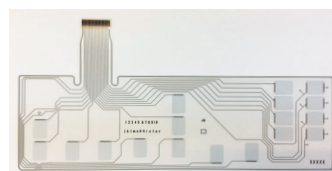
PET film with low temperature soldering

» FEATURES

1

Transparent electrode produced through screen printing

▶ ITO film sheet production simplified with printing rather than standard etching method.



Transparent Electrode printing film circuit board =PET film

2

LED Illumination enhanced

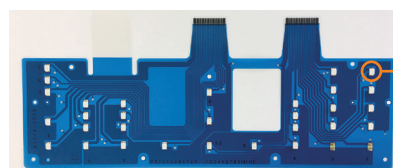
▶ With the transparent electrode, it is possible to illuminate the entire switch.



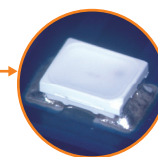
3

Increased design freedom with PET film base

▶ PET film serves not only as the electrode printed circuit, but for illumination as well. Design options are increased including flexibility for curved surfaces, etc.



LED mounted printed circuit board =PET film



Chip components are mounted on PET film with low temperature soldering